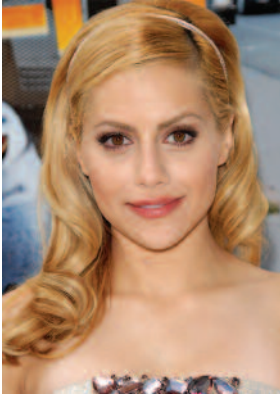


Transform Your Look with Celebrity Style

Velvet visits Willow Hair Consultants to learn of the latest revolution taking Newmarket by storm



"The tailor made hair extensions promise to fit all hair types, colours and lengths perfectly, attaching to tiny sections of your real hair through specially formulated plastic."



"Allowing your hair to grow as normal while connected, the Connect Seal is sworn to protect your natural hair from damage caused by other extension brands"



Every girl dreams of owning the luscious, voluptuous locks of the stars, those tresses that, ultimately, make you feel 'worth it', in the shiny condition that really makes people stop and stare.

The celebrity world seems so far removed from the everyday demands of modern day life that I had to see this for myself when I heard the Connect System of hair extensions had arrived in town, at Newmarket's newest salon, Willow Hair Consultants.

Endorsed by none other than the star of shampoo commercials Cheryl Cole, amongst an impressive client list, the Connect System has taken the salon industry by storm since its first arrival in 1989. These 100% human hair extensions are still considered the finest on the market, appearing in an endless list of blockbuster hits including the James Bond movie Casino Royale, and Peter Jackson's epic Lord of the Rings.

Training in the country's capital, Willow Hair Consultants' salon owner, Willow Pearson, has not only brought the celebrity-endorsed brand to our doorstep, but has also made it affordable. Instantly transforming the look of any wearer, the extensions can not only

be used to lengthen, but can also create the texture we all so crave and desire, in a bespoke yet natural manner.

The tailor-made hair extensions promise to fit all hair types, colours and lengths perfectly, attaching to tiny sections of your real hair through specially formulated plastic.

The discreet connections allow your hair to be worn up, down or tied away from the face with complete confidence - no one will ever know they're there. Often involving the use of six different shades, the Connect System aims to blend in with your own hair, giving a natural, fuller look.

Allowing your hair to grow as normal while connected, the Connect Seal is guaranteed to protect your natural hair from the kind of damage which may be caused by other extension brands; this allows wearers to create any style they wish without the awkward growing out stage.

Offering free consultations and free maintenance throughout July and August, Willow will transform your look in a matter of minutes. Join the likes of Lulu, Victoria Beckham, Abi Titmuss, Ruby Wax and Brittany Murphy in the extension revolution.